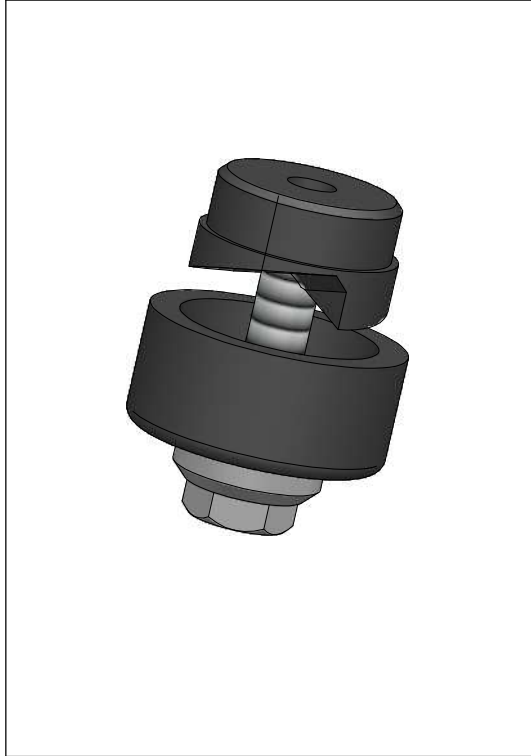




Tooling

Panel Punch



Application

Panel punch can be used to make a round panel cutout in a time saving and accurate way.

Specification

- Punches mild steel, aluminium, fiberglass and plastic.
- Mild steel upto 3,5 mm.
- The punch splits the slugs for easy removal.

Part Nr.	20.366	PMIR	17,5 mm, 11/16"
	20.367	PSIR	27 mm, 1-1/16"