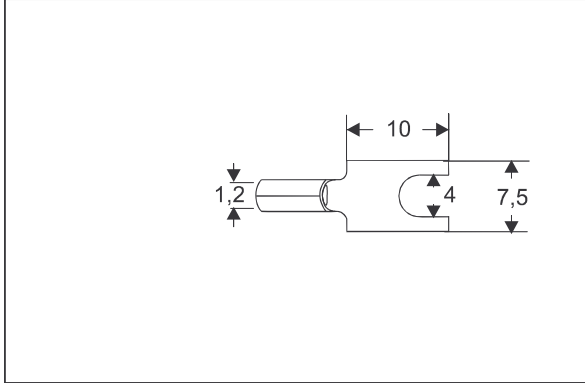


Terminals

Lugs



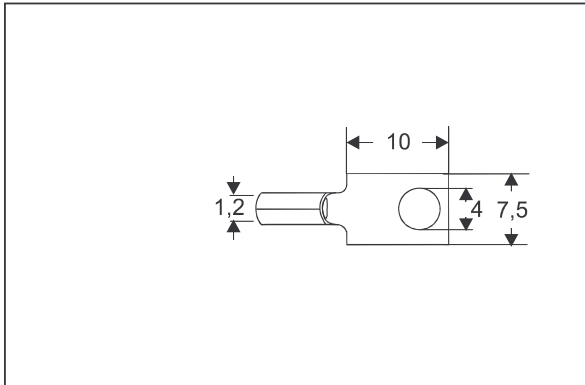
Spade Lug

Application: To be used as wire termination on thermocouples or on wires fitted into terminal blocks.

Construction:

- Solid thermocouple material.

Material	Code	Part No.
Chromel	KP/EP	A-20.131-1
Iron	JP	A-20.131-2
Copper	TP/RP	A-20.131-3
Nicrosil	NP	A-20.131-4
Alumel	KN	A-20.131-5
Constantan	EN/JN/TN	A-20.131-6
Alloy#11	RN	A-20.131-7
Nisil	NN	A-20.131-8



Ring Lug

Application: : To be used as wire termination on thermocouples or on wires fitted into terminal blocks.

Construction:

- Solid thermocouple material.

Material	Code	Part No.
Chromel	KP/EP	A-20.132-1
Iron	JP	A-20.132-2
Copper	TP/RP	A-20.132-3
Alumel	KN	A-20.132-5
Constantan	EN/JN/TN	A-20.132-6
Alloy#11	RN	A-20.132-7

01-08-07