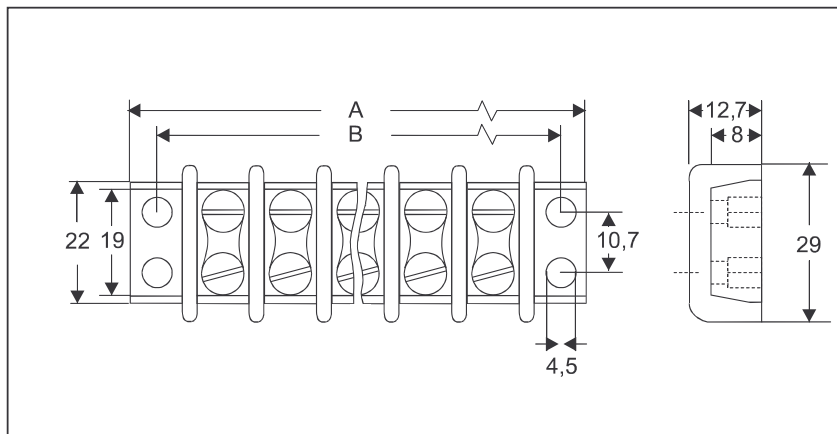


# Terminals

## Barrier Terminal Blocks



### Application:

Terminal blocks designed for use in terminal boxes and behind panels for connection of thermocouple and RTD circuits.

### Construction:

- Glass filled nylon body
- Barrier between each terminal prevents accidental short circuit
- Captive nuts for easy wiring.
- Available in large number of circuits.
- Can be used with the terminal lugs series A-20.131-x and A-20.132-x

### Wire size:

- Accepts wires from 0,2 mm to 3,0 mm.

### Temperature rating:

- 200 Deg. C Max.

### Calibration Identification:

- Body color black. Terminal strips stamped with material identification.

Calibration Code	J	K	T	E	R/S	U	N		
Contact Material Positive	Fe	NiCr	Cu	NiCr	Cu	Cu	NiCrSi		
Contact Material Negative	CuNi	NiAl	CuNi	CuNi	Alloy #11	Cu	NiSi		
Circuits	Dimensions								
	A	B							
1	41	33	BTB-1-J	BTB-1-K	BTB-1-T	BTB-1-E	BTB-1-R	BTB-1-U	BTB-1-N
2	52	44	BTB-2-J	BTB-2-K	BTB-2-T	BTB-2-E	BTB-2-R	BTB-2-U	BTB-2-N
3	86	78	BTB-3-J	BTB-3-K	BTB-3-T	BTB-3-E	BTB-3-R	BTB-3-U	BTB-3-N
4	108	100	BTB-4-J	BTB-4-K	BTB-4-T	BTB-4-E	BTB-4-R	BTB-4-U	BTB-4-N
5	130	122	BTB-5-J	BTB-5-K	BTB-5-T	BTB-5-E	BTB-5-R	BTB-5-U	BTB-5-N
6	152	144	BTB-6-J	BTB-6-K	BTB-6-T	BTB-6-E	BTB-6-R	BTB-6-U	BTB-6-N
8	197	189	BTB-8-J	BTB-8-K	BTB-8-T	BTB-8-E	BTB-8-R	BTB-8-U	BTB-8-N
10	241	233	BTB-10-J	BTB-10-K	BTB-10-T	BTB-10-E	BTB-10-R	BTB-10-U	BTB-10-N

01-08-07