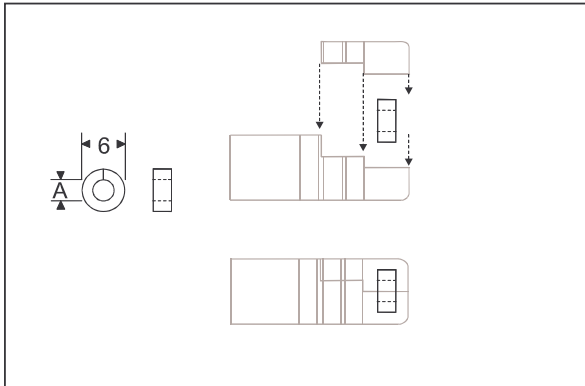


# Accessories

## Miniature Connectors



**Grommet**

**Application:** Fitted in the entrance hole of the connector to prevent moisture and dirt from entering the connector. Has limited strain relief capabilities.

**Construction:** Neoprene ring slit for easy mounting over wire. Will compress on the wire when the cover is fitted.

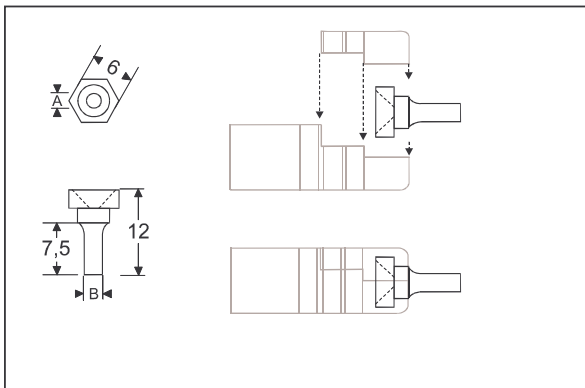
**Temperature rating:**  
120 Deg. C Max.

Part No.	Dim A
A-20.031-1	3,0 mm
A-20.031-2	0,5 mm
A-20.031-3	1,5 mm

**Application:** Designed for soldering or crimping on mineral insulated cable or crimping on insulated wire.

**Construction:**

- Brass machined insert with 0,1 mm tolerance on the cable OD



**Crimpinsert**

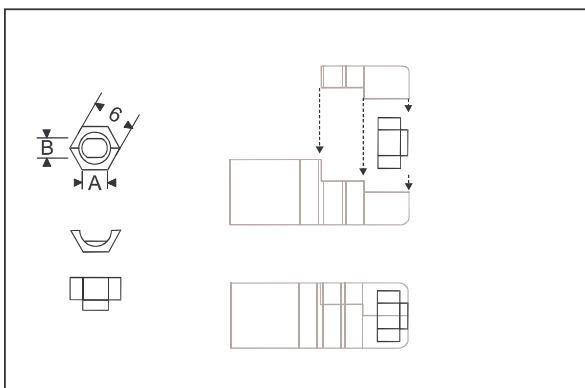
Part No.	Dim A (mm)	Dim B (mm)
A-20.024-1	1,1	2,4
A-20.024-2	1,6	2,4
A-20.024-3	1,7	2,4
A-20.024-4	2,1	3,2
A-20.024-5	2,4	3,2
A-20.024-6	3,1	4,5
A-20.024-7	3,3	4,5
A-20.024-8	Blind	4,5
A-20.024-9	3,9	4,5
A-20.024-12	1,9	3,2
A-20.024-13	3,5	4,5
A-20.051-1	5,0	5,8
A-20.225	0,6	2,4
A-20.279 *)	1,1	4,3

\*) special version for ceramic connector (square 5 mm)

**Application:** Wire inserts will provide a very good strain relief without any protruding parts from the connector.

**Construction:** Thermoplastic material with a round or oval hole to fit around a specific wire.

Part No.	Round/Oval	Dim A	Dim B (mm)
A-20.075-1	R	1,5	
A-20.075-5	R	3,5	
A-20.075-24	O	2,0	1,5



**Wire insert**

01-08-07