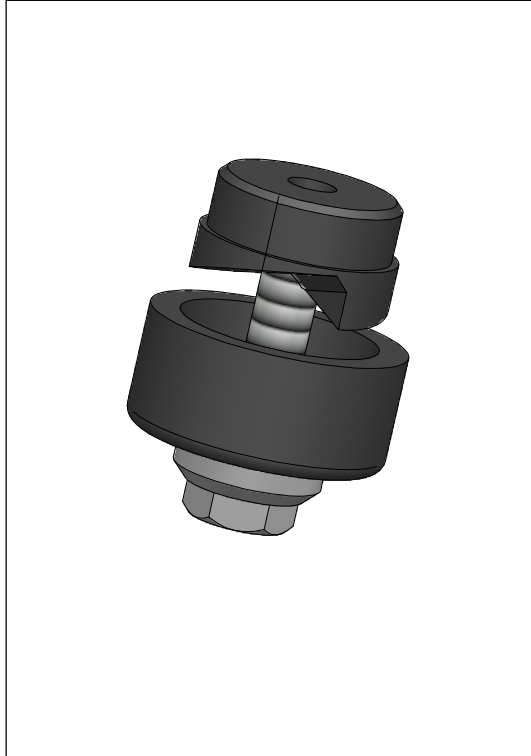




Tooling

Panel Punch



Application

Panel punch can be used to make a round panel cutout in a time saving and accurate way.

Specification

- Punches mild steel, aluminium, fiberglass and plastic.
- Mild steel upto 3,5 mm.
- The punch splits the slugs for easy removal.

| | | | |
|----------|--------|------|-----------------|
| Part Nr. | 20.366 | PMIR | 17,5 mm, 11/16" |
| | 20.367 | PSIR | 27 mm, 1-1/16" |